

ARTISANDOORS



EXTERIOR DOOR SYSTEMS | INTERIOR DOOR SYSTEMS | COMMERCIAL | HARDWARE



*One Lite door stained Chestnut shown with Nobel Glass.
Navis Paddle Lever and August Smart Lock Gen 4 in Silver.*

Madero door units are manufactured with 24 gauge steel, smooth white fiberglass or textured fiberglass slabs. Prehung in frame options of wood, white composite or textured composite partnered with a bronze sill and weather tight seals.

Simply decide the design and products that work best for your home, select your door size, jamb depth, door handing and if required, complementary glass. It is that simple.



Table of Contents

2022-2023



4-7	Design Your Madero Door
4-5	Single Door & Panelled Sidelite Configuration
6-7	Single Door & Direct Glazed Sidelite Configuration
8-9	Garden Patio Doors
10-11	Larson Storm Doors
12-35	Choose Your Door Design
14-15	Panelled Teak Fiberglass
16-17	Panelled Mahogany Fiberglass
18-19	Panelled Steel
20-21	4 Lite Narrow Lite Neulite Fiberglass
22-23	Narrow Lite Steel
24-25	3 Panel Equal
26-27	Craftsman Steel
28-29	Craftsman Classic Craftsman Contemporary
30-31	3/4 Lite 3/4 Lite Neulite
32-33	1/2 Lite
34	One Lite or Flush
35	Full Lite Neulite Fiberglass
36-73	Choose Your Door Glass
38-41	Spotlites
42-47	Textured Glass
48-60	Decorative Glass
61	Wrought Iron
62-63	Silkscreen Glass
64-65	V-Groove
66-73	Functional
74-83	Hardware Options
84-89	Door Specifications
90-91	Pre-Finishing Options
92-95	Product Measurements & Checklists



The Narrow Lite door is showcased with panelled sidelites and Clear glass.



Design your Madero Door

Handcrafted. Refined.

The Artisan Series by Madero is comprised of handcrafted door systems to suit your home. Inswing or outswing? Left hand or right hand? 2/8, 2/10, 3/0 or custom? Jamb depth of 4-9/16, 6-9/16, 8-9/16 or custom? Hardware prep? Choose from the designs in this booklet, from the product selection shown and enjoy the process!

Single Door

The options are endless for single opening units. Choose from door and glass designs featured within this catalogue. Perfect for all openings within your home.



Right Hand
Inswing

Right Hand
Outswing

Left Hand
Inswing

Left Hand
Outswing

Panelled Sidelite

Sidelites provide a statement by maximizing the beauty of your front entrance. Available in a fixed configuration - with glass size of 1/2, 3/4 or full height.



Single with left sidelite

Single with right sidelite

Single with two sidelites



Vog steel door painted Melon with direct glazed sidelite system. Shown with Schlage Greenwich Handleset in Matte Black.



Design

your Madero Door

Direct Glazed Sidelites & Transoms

Glass extends edge to edge, with no need for a sidelite panel. Direct glazed sidelites and transom provide full unobscured glass coverage. Pair any single door system with one or two direct glazed sidelites and/or transom. Choose from Frosted or Clear Low E glass options.

Sidelite and Transom Glass Options



Frosted



Clear Low E

Additional glass options can be found throughout the brochure, and on Madero.ca



Single with left sidelite



Single with right sidelite



Single with two sidelites

Transom optional.



Single hinged, left handed outswing Garden Patio Doors painted Black with fixed panels installed with Clear glass. Shown with Schlage Accent Lever in Satin Nickel.



Garden Patio Doors

Artisan Garden Patio doors are available in single hinged or double hinged for your new construction or renovation project. Choose any one lite door and glass configuration.

For Garden Venting units, refer to the Garden Patio brochure on Madero.ca.



Single Hinged Garden Patio Doors
One Door Active | One Door Fixed



Double Hinged Garden Patio Doors
One Door Active | One Door Inactive



Model 149FV Elegant Selection, shown in Black.

Add a Larson storm door to any model of Madero door system in 32", 34" or 36" by standard 80" height. Available as factory installed or as DIY for existing doors in your home. A Larson storm door improves energy efficiency of the entryway by up to 80%. Please contact your Madero dealer for custom sizes and additional products available.

Ventilating Storm Doors

Let in the breeze when you want, the way you want, with these ventilating doors!

Storm doors add a great value. Choose from all-metal frame construction or a tough, weather-resistant DuraTech® surface. Reversa Screen provides top or bottom venting.



Model 146 Midview



Model 360-16



Model 288-SS



Model 360-79





Choose your Door Design

First impressions matter. The design of your door reflects both your home's architecture and your personality. Your entrance system sets a warm and welcoming invitation.

12-35

Door Designs

14-15	Panelled Teak Fiberglass
16-17	Panelled Mahogany Fiberglass
18-19	Panelled Steel
20-21	4 Lite Narrow Lite Neulite Fiberglass
22-23	Narrow Lite Steel
24-25	3 Panel Equal
26-27	Craftsman Steel
28-29	Craftsman Classic Craftsman Contemporary
30-31	3/4 Lite 3/4 Lite Neulite
32-33	1/2 Lite
34	One Lite or Flush
35	Full Lite Neulite Fiberglass



Teak Woodgrain Door. Shown with 16" NoirTek™ Offset Pull, Schlage Encode™ Smart Wifi Deadbolt in Satin Nickel and Ives RL30 Roller Latch.

Panelled Teak Fiberglass

Contemporary Teak

Long praised for its natural beauty and endurance to the elements, teak has become one of the most valued wood species on the planet.

A modern grooved Teak woodgrain fiberglass door slab is perfect for contemporary and retro style homes. Prehung in a composite frame, with an option to use a primed wood frame. Choose direct glazed sidelites and transom to complement this luxurious panelled door.

Sizes: Width: 2/8, 2/10, 3/0 | Height: 6/8



Light Oak Medium Oak

Only available in 3/0 width.
Only available with painted frame option.



Raw Oak

Unfinished to accept paint or stain.

Sidelite Glass:



Clear Low E Transclear Low E

Additional glass options can be found throughout the brochure, and on madero.ca



Medium Oak - TG99 with 60" Regalead pull in Matte Black.



Light Oak - TG99 with Direct Glazed Sidelites & Transom in Clear Glass. Shown with 16" NoirTek™ Offset Pull.



Model RG12, stained Coffee Bean. Shown with Schlage Plymouth handleset in Bright Chrome.

Panelled Mahogany Fiberglass

Rustic Mahogany

The mahogany woodgrain series emulates the beauty of natural hardwood. Perfect for Tuscan or Spanish inspired architectural style, providing maximum privacy with no glass requirement. Stain or paint the fiberglass doors to achieve an individualized look.

A one panel plank complements the sleek architectural styling of new home designs. A two panel plank best complements a country or heritage style home. Prehung in a Mahogany woodgrain composite frame, with an option to use a primed wood frame. Choose direct glazed sidelites and transom to complement this panelled door.

Sizes: Width: 3/0 | Height: 6/8, 8/0



ENRG12

ENRG22

Unfinished to accept paint or stain. Refer to page 91 for stain options.

Sidelite Glass:



Clear Low E

Transclear Low E

Additional glass options can be found throughout the brochure, and on madero.ca



Model RG22 with custom stain.



Model RG12 custom painted with Direct Glazed Sidelites in Clear Glass. Shown with Schlage Georgian Handleset in Matte Black.



*Soho door, painted Tangerine. Shown with
16" straight NoirTek™ pull, Schlage Sense™ Deadbolt .*

Panelled Steel

Tao

Tao means harmony with nature. This steel door's horizontal lines feature gentle organic curves for a minimalist style. Prehung in a smooth white composite frame, with an option to use a primed wood frame. Choose direct glazed sidelites and transom to complement this bold design.

Sizes: Width: 2/10, 3/0 | Height: 6/8



Horizontal, curved embossed lines



Model Tao

Soho

This steel four panel embossed configuration is very popular in today's architecture. Prehung in a smooth white composite frame, with an option to use a primed wood frame. Choose direct glazed sidelites and transom to complement this classic design.

Sizes: Width: 2/8, 3/0 | Height: 6/8



Shaker inspired embossment



Model Soho

Vog

Horizontal lines and angular embossing provide a graceful and simple style. Prehung in a smooth white composite frame, with an option to use a primed wood frame. Choose direct glazed sidelites and transom to complement this versatile design.

Sizes: Width: 2/10, 3/0 | Height: 6/8



Horizontal, angular embossed lines



Model Vog



The SG14 smooth white fiberglass Neulite door makes a dramatic entrance in this double hinged door system. Shown with 36" Matte Black Regalead pull.

4 Lite | Narrow Lite Neulite Fiberglass

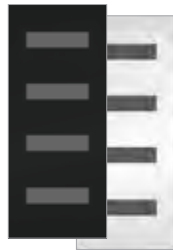
Two Options: 4 Lite | Narrow Lite

Brighten your entry with a Neulite door. These classic mid-century modern designs, characterized by sleek lines and deliberate simplicity, admits diffused light while maintaining privacy.

Door Only:



SG14 Smooth White
Width: 2/8, 2/10, 3/0
Height: 6/8



**SG14 Black Exterior
White Interior**
Width: 3/0
Height: 6/8



SG11 Smooth White
Width: 2/8, 2/10, 3/0
Height: 6/8



**SG11 Black Exterior
White Interior**
Width: 3/0
Height: 6/8

Frame Only:

Prehung in a smooth white composite frame, with an option to use a primed wood frame. Custom painting of frame available. Choose direct glazed sidelites and transom to complement this modern look.



The black exterior-white interior fiberglass door is prepigmented for a long lasting finish. Frame choices are prefinished white composite or primed wood.

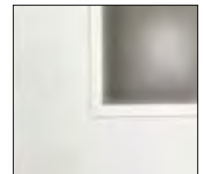
Glass Options:



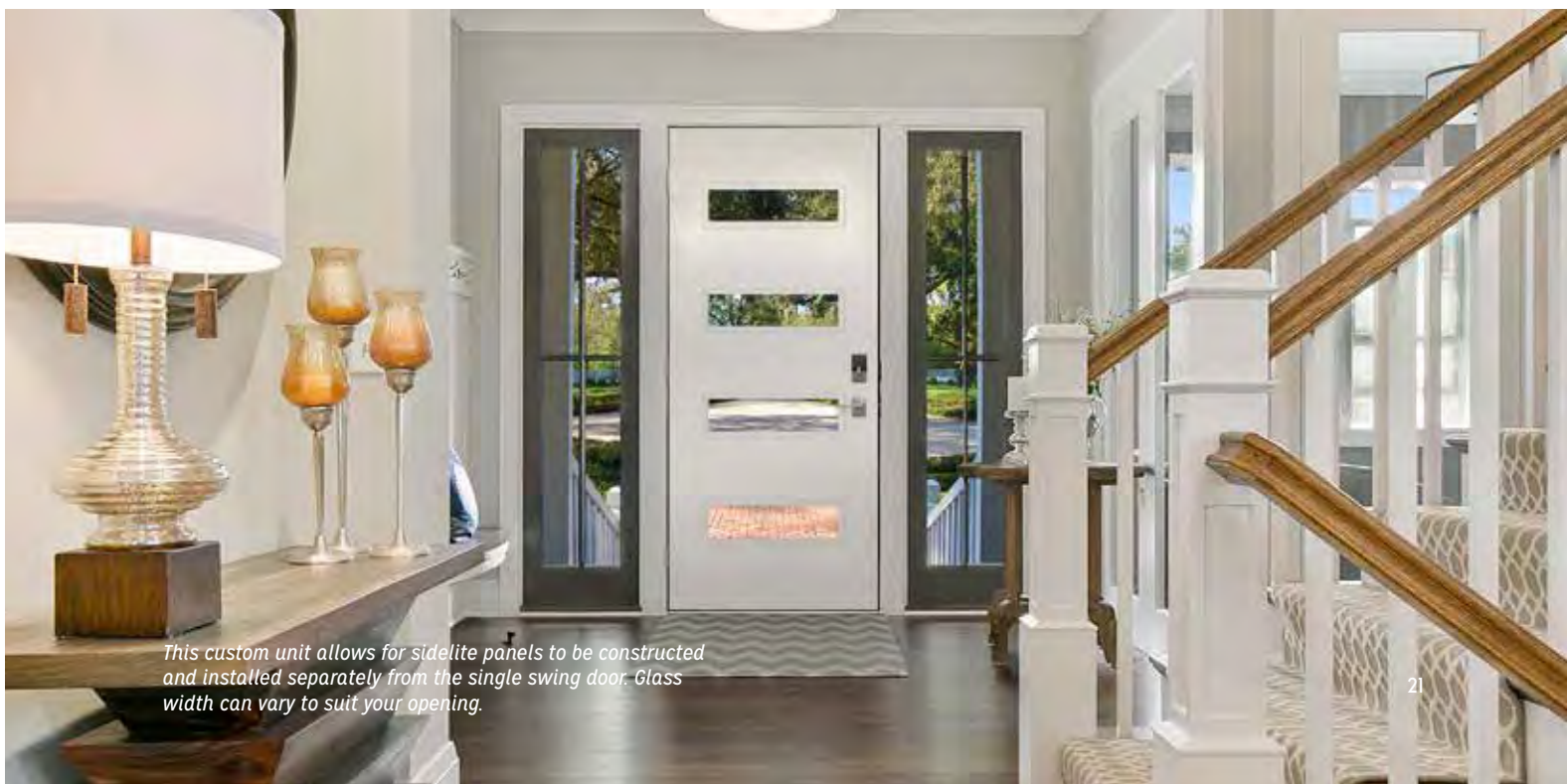
Clear Low E



Transclear Low E



Smooth White Neulite Detail



This custom unit allows for sidelite panels to be constructed and installed separately from the single swing door. Glass width can vary to suit your opening.



Narrow Lite door system featuring a Melon painted slab with Clear glass, black painted frame. Ordered with no brickmould.

Narrow Lite Steel

Linea

Linea's distinctive embossing gives it a post industrial look. Select glass from options below. Available in steel only. Prehung with frame options of wood or smooth white composite. Linea featured with panelled sidelite option.

Sizes: Width: 2/8, 2/10, 3/0 | Height: 6/8



Embossed post-industrial look



Model Linea

Flush 764N

When using a flush slab, you have three unique looks to choose from. One insert can be positioned on the left or right hand side, or centered for a mid-century feel. The N2 model works well with matching sidelites on both sides. Select your glass from options below. Available in either a steel or fiberglass door, with frame options of wood and smooth white composite.

Sizes: Width: 2/6, 2/8, 2/10, 3/0 | Height: 6/8, 8/0

Glass Size: 7" x 64" (6/8), 8" x 80" (8/0)



Narrow Lite Centered
764-N
880-N



Narrow Lite
764-NL (Left)
764-NR (Right)
880-NL
880-NR



2 Narrow Lite
764-N2
880-N2



Model Flush 764N

Glass options

Choose from the selection shown for matching door and sidelite glass. Refer to madero.ca for glass door visualization.



Alys



Azur



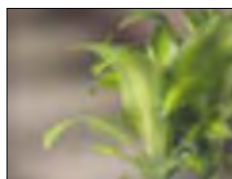
Celeste



Chinchilla



Circuit



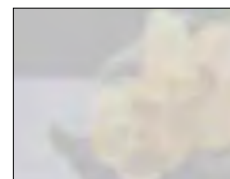
Clear - Low E



Cuzco



Fluid



Frosted



Rain



*3 Lite steel door in painted Black.
Shown with Celeste glass, and custom handle.*

3 Panel Equal

3 Panel Equal

This door unit is available with a steel slab. Deep embossing provides dramatic street appeal. As a single opening or with full glazed sidelites, this is an excellent choice for your home. Prehung with frame options of wood or smooth white composite.

Sizes: Width: 2/8, 2/10, 3/0 | Height: 6/8



Model 13

3 Lite

The 3 lite door with contemporary framed 22" x 17" door glass and 7" x 64" sidelite glass provides a very modern look. Available in steel or fiberglass with frame options of wood or smooth white composite.

Sizes: Width: 2/8, 2/10, 3/0 | Height: 6/8



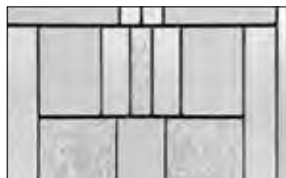
Model 00

Glass options

Choose from the selection shown for matching door and sidelite glass. Refer to madero.ca for glass door visualization.



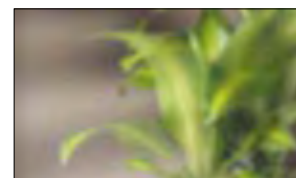
Alys



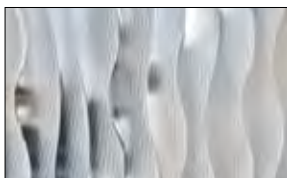
Cachet



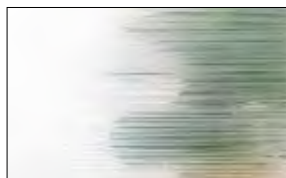
Celeste



Clear - Low E



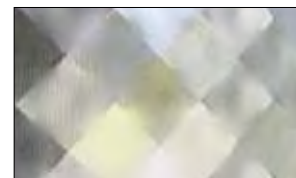
Fluid



Kira



Sandblast



Soft



Victoria steel door with panelled sidelites and clear glass. Custom painted. Shown with Schlage Latitude Lever and Schlage Connect deadbolt in Matte Black.

Craftsman Steel

Victoria

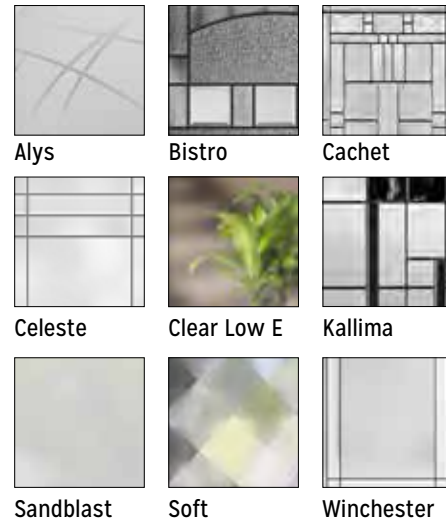
Available in a steel door only, the Victoria Shaker is inspired by classic American architectural styles. The embossing showcases beautifully when the door is painted. Used as either a panelled door or add one 22" x 14-7/16" glass insert. Prehung in a smooth white composite frame or primed wood frame. Choose matching glass in a full panelled sidelite.

Sizes: Width: 2/8, 2/10, 3/0 | Height: 6/8
Smooth White or Black Exterior-White Interior



Glass Options

Choose from the selection shown for matching door and sidelite glass. Refer to madero.ca for glass in door visualization.



Decorative Shelf
Optional for the Victoria Shaker steel door. Easily installed with screws.



Victoria steel door featuring Winchester Glass, painted Colony. Shown with Schlage Barcelona handleset in Aged Bronze.



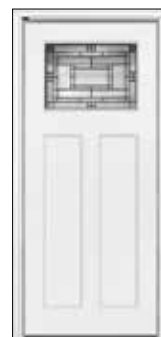
*Craftsman Smooth White with Metropolis glass.
Shown with Schlage custom Addison 3/4 Single
Cylinder handleset in Matte Black.*

Classic Craftsman

Fir grain has straight, fine vertical graining with deep embossed panels creating beautiful shadow lines and the appearance of real wood. When ordered, the door is a light almond color to accept paint or stain. Choose matching panelled sidelites and a fir composite frame. Smooth White is timeless design suitable for so many architectural homes. This maintenance free door partners with a composite frame and matching panelled sidelites.



FG Metropolis
Width: 3/0
Height: 6/8, 8/0



SG Metropolis
Width: 3/0
Height: 6/8, 8/0

Metropolis glass included as shown.

Add-on 4 Black Dentil Shelf
Sold Separately





Contemporary Craftsman door featuring Clear Low E Glass. Shown with Schlage Century handleset in Satin Chrome

Contemporary Craftsman

The Contemporary Craftsman is NEW in 2022. This three panel design provides the smooth panels and clean lines of a traditional shaker door. Available factory glazed in Clear or Transclear Low E glass. Option to add a 3 Lite SDL kit. This maintenance free door is prehung in a white composite or wood frame, and partners with a full panelled sidelites.



SG-CRAFT30

Width: 3/0
Height: 6/8

Glass Options:



Clear Low E



Transclear Low E

Add-on 3 Lite SDL Kit

Sold Separately





3/4 Lite door painted Warm White shown with Portrait glass and custom handle.

3/4 Lite

Coordinate all entry ways in your home by using Model 25 as a paneled door or with a glass insert. Available in a steel or fiberglass door prehung with frame options of wood, smooth white composite or textured composite. Partners best with a panelled sidelite featuring 3/4 glass. Choose any glass design 22" x 48".

Model 24 gives a clean look with larger viewing area. No need for screw-in inserts. Available in a Neulite 3/4 fiberglass door prehung with frame options of wood, smooth white composite or textured composite. Partner with a Neulite 3/4 paneled sidelite. Choose any glass design 22" x 48".



Model 25
Smooth White
Width: 2/8, 2/10, 3/0
Height: 6/8



Model 24-2248
Smooth White
Width: 2/8, 2/10, 3/0
Height: 6/8



Smooth White Neulite Detail



3/4 Lite Neulite door painted Ash, shown with Transclear Low E glass, 4 lite SDL kit and custom handle set.

3/4 Lite Neulite

Glass size 26" x 48"

Neulite glazing provides a larger viewing area, with no screw-in insert. Available only in fiberglass, with frame options of wood, smooth white composite or textured composite. Partner with a Neulite 3/4 paneled sidelite. Add a transom for a modern look. Simulated Divided Lites are available in a 4 or 6 lite configuration.

Sizes: Width: 3/0 | Height: 6/8

Door Only:



Model 24-2648
Smooth White



Model 24-2648
Black Exterior
White Interior

Glass Options:



Clear Low E



Transclear Low E



Smooth White Neulite Detail



Entrada featuring 1/2 Lite door with Full Lite sidelites and Oak Park glass. Shown with Schlage Camelot Handleset and B60 Cylindrical Deadbolt with Camelot Rose in Matte Black.

1/2 Lite

1/2 Lite | 2 Panel

An affordable option to match all the doors in your home. An extensive selection of 22" x 36" glass is available. Choose a steel or fiberglass door with frame options of wood, smooth white composite or textured composite. Doors partner well with 1/2 or full glass in panelled sidelites.

Sizes: Width: 2/8, 2/10, 3/0 | Height: 6/8



Model 28



Cachet door glass shown

1/2 Lite | 6 Panel

Coordinate all entry ways in your home by using a 6 panel slab with or without glass. An extensive selection of 22" x 36" glass is available. Choose from steel or fiberglass door with frame options of wood, smooth white composite or textured composite. Doors partner well with 1/2 or full glass in panelled sidelites.

Sizes: Width: 2/8, 2/10, 3/0 | Height: 6/8



Model 62



Mini Blinds door glass shown

1/2 Lite Neulite

The flush glazed options give a cleaner look, with a larger viewing area and no need for screw-in inserts. An extensive selection of 22" x 36" glass is available. Available in fiberglass only with frame options of wood, smooth white composite or textured composite. Doors partner well with 1/2 or full glass in panelled sidelites.

Sizes: Width: 2/8, 2/10, 3/0 | Height: 6/8



Model 23



Clear door glass shown



Nobel glass with custom Satin sidelite.

Flush Door | One Lite

The simplicity of a flush door (Model 00) can be used in many locations throughout the home. When partnered with a full length door pull or luxurious door hardware, the look becomes very modern.

One lite glass inserts can be added for rooms requiring extra natural light. The selection of glass options is unlimited for both the door and panelled sidelites. Glass selections can be found on pages 36 to 73. For visualization, go to madero.ca.

Available in a steel or fiberglass door with frame options of wood, smooth white composite or textured composite.

Sizes: Width: 2/6, 2/8, 2/10, 3/0, 3/6 | Height: 6/8, 8/0 **Glass Size:** 2/6, 2/8 x 6/8 - 20" x 64" 2/6, 2/8 x 8/0 - 20" x 80"
2/10, 3/0 x 6/8 - 22" x 64" 2/10, 3/0 x 8/0 - 22" x 80"



Nuanda glass with custom Sandblast sidelite.

Smooth White Neulite Detail

Full Lite Neulite Fiberglass

The Full Lite Neulite Fiberglass door offers a wider viewing area and cleaner appearance. A pre-pigmented white skin has a 25 year warranty and accepts paint or stain. Available with frame options of wood, smooth white composite or textured composite. Glass selections can be found on pages 36 to 73. For visualization, go to madero.ca

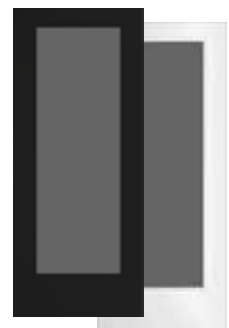
Available as single door or partnered with matching flush glazed, panelled or direct glazed sidelites.

Smooth White: Width: 2/8, 2/10, 3/0 | Height: 6/8

Black Exterior-White Interior: Width: 3/0 | Height: 6/8



SG10 Smooth White



SG10 Black Exterior - White Interior Door only



Double hinged door system with one active and one fixed door. Shown painted Black, featuring Equation glass which offers the simplicity and privacy of sandblasted finish glass, crossed with black perpendicular lines.



Choose your Door Glass

Door glass is a great way to customize your front door and bring natural light into your home. Design selections from decorative glass to textured glass provide a solution for every architectural style of home.

38-41

Spotlites

Choose from the selection shown for matching door and sidelite glass.

42-47

Textured Glass

Textures and patterns with a diverse selection of privacy bring a new dimension to entryway door glass.

48-60

Decorative Glass

Handcrafted glass is cut and elegantly shaped to match the design preferences of home owners. Privacy levels range from 0 (Transparent) to 10 (Opaque).

61

Wrought Iron

For homeowners who prefer wrought iron and rich patinas over highly polished finishes, this collection will have a design made for you.

62-63

Silkscreen Glass

Silkscreen decorative glass is made by printing a layer of UV cured ink on the surface of glass through the screen mesh used for tempering. As a result glass is durable, scratch proof, solar shading, anti-glare and beautiful.

64-65

V-Groove

V-Groove patterns incorporate an engraving process on sandblasted tempered glass, providing texture and elegance while still having the allure of decorative glass.

66-73

Functional

When function and budget matter, Clear Glass, Clear Glass with Grilles, Venting Units and Mini Blinds are the primary choices.



Spotlites 6 lite (8/0 height) horizontal oak woodgrain textured door with frosted glass, 14" frosted sidelite, 16" straight Noirtek™ door pull and Schlage B60 deadbolt in matte black.

Spotlites

Glass Options

Choose from the selection shown for matching door and sidelite glass. Refer to madero.ca for glass in door visualization.

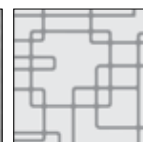
All glass available with 7" x 64" sidelite glass.



Celebration Ocean



Chinchilla



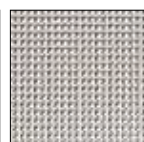
Circuit



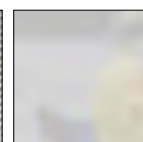
Clear - Low E



Celebration Earth



Cubed



Frosted



Rain



3 Lite Vertical Option B painted Warm White. Shown with Schlage Century handleset in Satin Nickel.

Spotlite Model 842

Spotlites are the ideal choice for a modern mid-century home, while also complementing a variety of home designs. Eight glass patterns are available in 22" x 3.5". Available in a steel or fiberglass door and with frame options of wood, smooth white composite or textured composite.

Sizes: Width: 2/8, 2/10, 3/0, 3/6 | Height: 6/8, 8/0
Glass Size: 22" x 3.5"



3 Lite Vertical Option A
223-3LVA



3 Lite Vertical Option B
223-3LVB



5 Lite Horizontal
223-5LH



6 Lite Horizontal (8/0)
223-6LH



Model 651 5 Lite with Clear Glass, painted Tangerine. Custom hardware.

Spotlite Model 651

This design adds a modern flair to any architectural styling. Eight glass patterns are available in 22" x 10". Clear or frosted door glass partnered with direct glazed sidelites are the most popular. Available in a steel or fiberglass door with frame options of wood, smooth white composite or textured composite.

Sizes: Width: 2/8, 2/10, 3/0, 3/6 | Height: 6/8, 8/0
Glass Size: 22" x 10"



4 Lite
2210-4



5 Lite (8/0)
2210-5



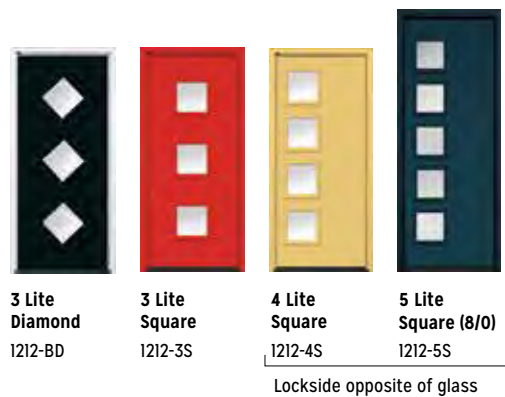
4 Lite Square spotlites painted Melon with Celebration Earth glass pattern. Shown with 60" straight Stainless Steel MegaTek™ door pull.

Spotlite Model 840

This popular pattern that began in the 1950's has made a resurgence to elevate modern home architecture. The 12" x 12" square is available in 8 glass patterns. Choose a steel or fiberglass door with frame options of wood, smooth white composite or textured composite.

Sizes: Width: 2/8, 2/10, 3/0 | Height: 6/8, 8/0

Glass Sizes: 12" x 12"



Textured Glass

Textures and patterns with a diverse selection of privacy bring a new dimension to entryway door glass. Textured glass is available in door glass sizes of 1/2, 3/4, and full lites with matching panelled sidelites. Direct glazed sidelites partner with Clear Low E or Frosted Low E and additional glass options as found throughout the brochure, and on madero.ca

PRIVACY RATING



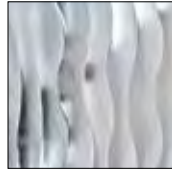
1 - Transparent
Objects can be seen clearly through the glass from the other side.

5 - Diffused
Objects are diffused, but still detectable through the glass from the other side.

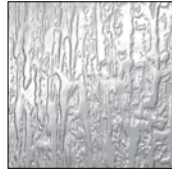
10 - Private
Only light will travel through the glass from the other side.



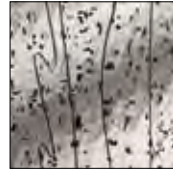
BLANCA \$\$
View on madero.ca



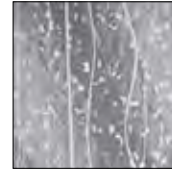
FLUID \$\$
View on page 43



RAIN \$
View on page 42



MISTIFY BLACK \$\$
View on page 47



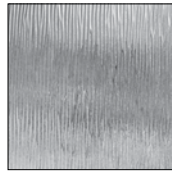
MISTIFY WHITE \$\$
View on page 47



SANDBLAST \$\$
View on page 44



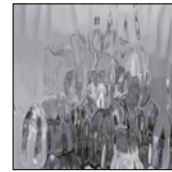
SOFT \$\$
View on page 46



STREAMED \$
View on madero.ca



TEXTILE \$\$
View on page 45



VAPOR \$\$
View on page 43



Rain

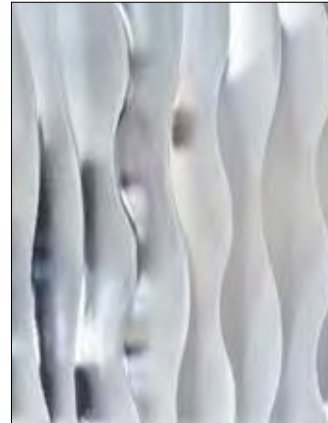
Rain features a vertical pattern and a textured surface that create the illusion of rain trickling down a window. Textured glass surface is enclosed in glass. Privacy level 9.





Fluid

This innovative glass design leaves an impression of calmness. Its bold yet simple pattern is well suited for contemporary entrances. Privacy level 5.



Vapor

Reminiscent of the northern lights. Vapor creates an ethereal play of light and shadow. Textured surface exposed to the inside of your home. Low E - privacy level 6.





Novatech®

Sandblast

Sandblasting gives this textured glass an elegant surface that allows natural colours to penetrate while preserving a high degree of privacy. Low E with Argon. Privacy level 9.



New



Textile

Textile offers a delicate texture of sandblasted finish fibers, intertwined to create privacy and to filter light. Textile pairs perfectly with natural materials and textures of wood and stone to create a rustic and warm atmosphere. Privacy level 5.

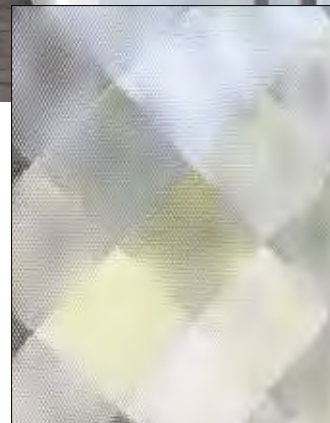




Novatech®

Soft

Soft attracts the eye and touch thanks to its unconventional upholstery looking pattern. Soft textured glass is a technological advancement that will define the character of your entrance. The textured surface is enclosed in glass. Low E with Argon. Privacy level 5.

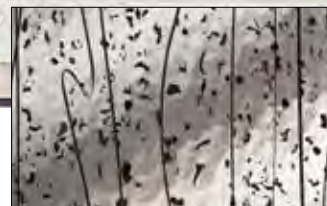


New

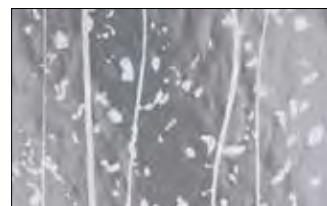


Mistify

A playful combination of pattern and texture, the drizzle pattern of Mistify is fused to softly textured glass, resulting in a mesmerizing statement piece for any modern entryway and privacy for the home. Privacy level 6.



Mistify Black



Mistify White

Decorative Glass

Handcrafted glass is cut and elegantly shaped to match the diverse design preferences of home owners. Decorative glass is available in door glass size of 1/2, 3/4 and full lites with matching panelled sidelites, unless otherwise shown on feature pages. Direct glazed sidelites and transoms are available with Clear Low E or Frosted Low E glass.

For more glass options not featured, refer to madero.ca

PRIVACY RATING



1 - Transparent
Objects can be seen clearly through the glass from the other side.

5 - Diffused
Objects are diffused, but still detectable through the glass from the other side.

10 - Private
Only light will travel through the glass from the other side.



ARIMA \$\$
View on page 57



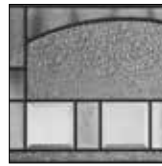
AVENUE \$\$
View on madero.ca



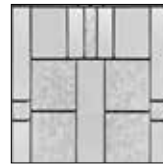
AZUR \$\$
View on madero.ca



BELMONT \$\$
View on page 49



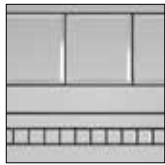
BISTRO \$\$
View on page 51



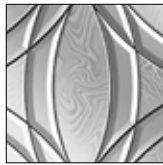
CACHET \$\$\$
View on page 33



CELESTE \$\$
View on page 60



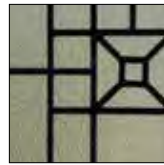
CHANELLE \$\$\$
View on page 50



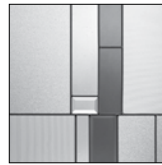
CHELSEA \$\$\$
View on madero.ca



CROSSWALK \$\$
View on page 58



COURTYARD \$\$\$
View on page 61



CUZCO \$\$\$
View on page 55



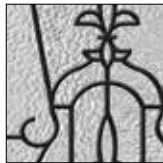
DORIAN \$\$
View on madero.ca



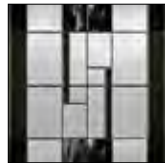
ELEMENT \$\$
View on page 59



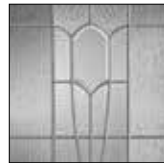
EQUATION \$\$
View on page 36



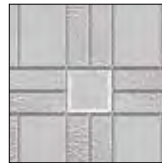
JACINTO \$\$
View on page 61



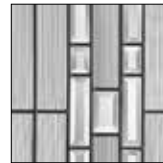
KALLIMA \$\$\$
View on page 53



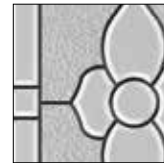
MISTRAL \$\$\$
View on madero.ca



MONTEREY \$\$\$
View on madero.ca



NAPLES \$\$\$
View on madero.ca



NOUVEAU \$\$\$
View on madero.ca



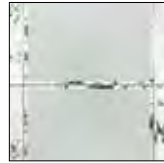
NOBEL \$\$\$
View on madero.ca



NUANDO \$\$\$
View on page 35



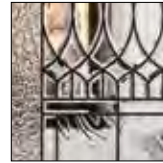
OAK PARK \$\$\$
View on page 32



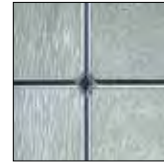
OPAL \$\$\$
View on page 54



OPHIR \$\$\$
View on page 56



PARIS \$\$\$
View on madero.ca



PARKWAY \$\$\$
View on madero.ca



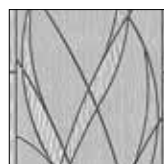
PORTRAIT \$\$\$
View on page 30



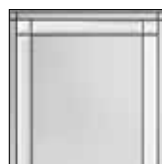
RENEWED IMPRESSIONS \$\$\$
View on madero.ca



RYDER \$\$
View on page 60



WATERSIDE \$\$\$
View on page 59



WINCHESTER \$\$
View on page 52



Novatech®

Belmont

Belmont's minimalist, asymmetrical composition of flat black patina caming and satin finish glass fits perfectly with the volumes and materials found in the architecture of contemporary houses. Privacy level 7.





Novatech®



Chanelle

Stylish Chanelle can be elegantly integrated into the architectural styling of a bygone era, or matched to the simple, sleek lines of today. Beveling is the hallmark of this refined design. Chinchilla, Niagara and Beveled clear glass with patina coming provide privacy level 6. Decorative glass is enclosed, providing a triple glazed unit. Low E with Argon.

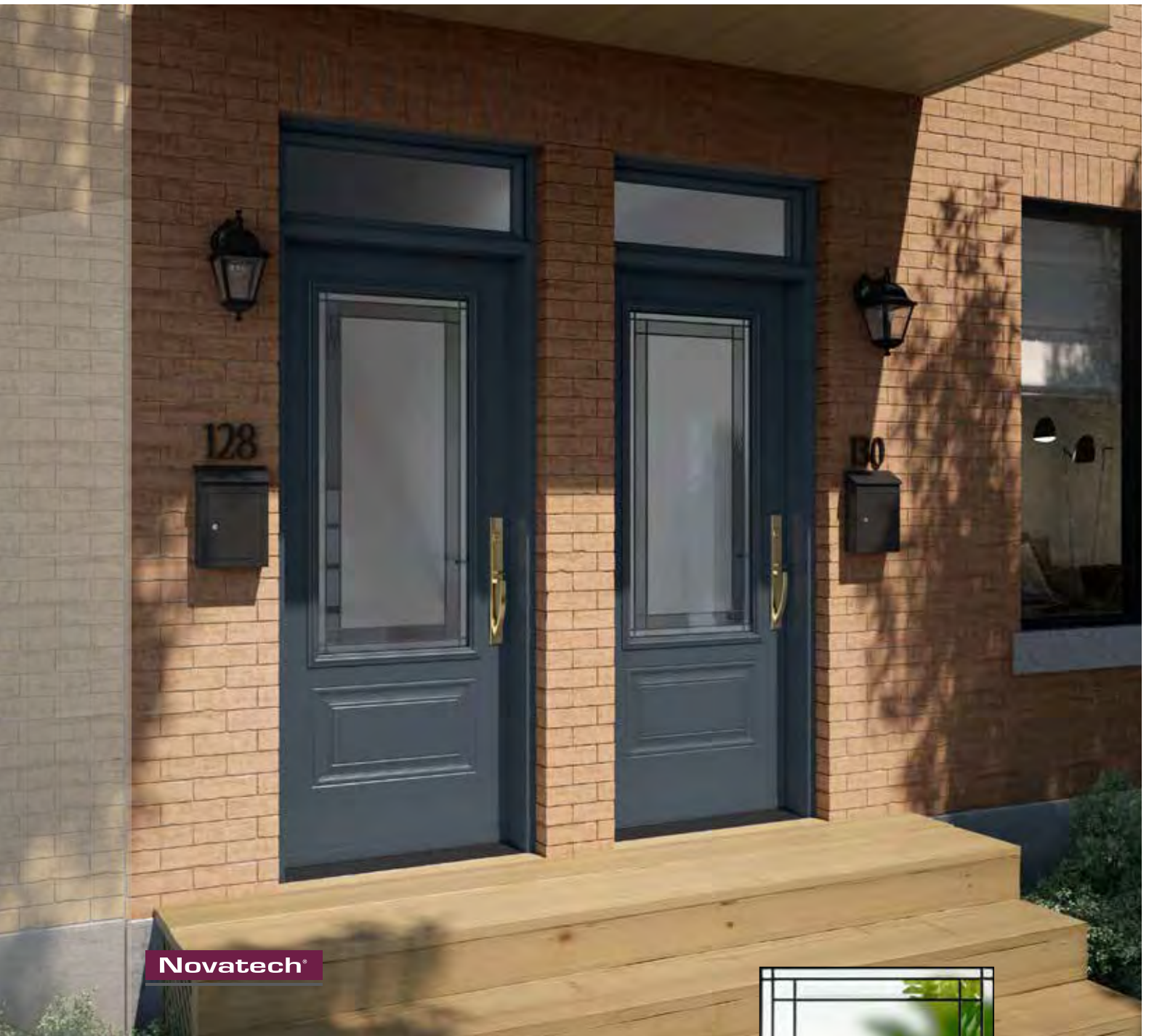


Novatech®

Bistro

Bistro's arch head piece and its well placed clear beveled square panes, contribute to its overall warmth. Chinchilla, Diamond and Beveled clear glass combine with patina coming. Decorative glass is enclosed, providing a triple paned unit. Low E with Argon. Privacy level 6.





Winchester

Classic style doorglass in its simplest form. Sleek and balanced, Winchester offers a rich, contrasting mix of clear and satin finish glass with black patina coming. With its elegant beveled clear glass border, Winchester provides both privacy and visibility. Privacy level 5.





Novatech®

Kallima

Kallima will charm lovers of glass. Characterized by its handmade pieces of blended black and clear glass, the Kallima offers an exclusive look every time. Privacy level 9.





Novatech®

Opal

Opal is the result of a rich arrangement of beveled glass in a timeless traditional style. Clear and Satin finish glass will ensure the privacy of your home, while allowing light to flood in. Decorative glass is enclosed, providing a triple paned unit. Low E with Argon. Privacy level 7.





Cuzco

The contrast between the grey and clear tones add a new dimension to the decor of your home. Pear, Mistlite and Seedy glass partner with dark grey accents to make this glass a designers choice. Antique black caming will complement your door hardware. Decorative glass is enclosed, providing a triple glazed unit. Privacy level 7





Novatech®

Ophir

Contrasting vertical textured glass gives movement to Ophir. Granite, Pinhead, Gray and Aqualite glass paired with zinc or patina coming allow for a balance of privacy and light. Privacy level 7.

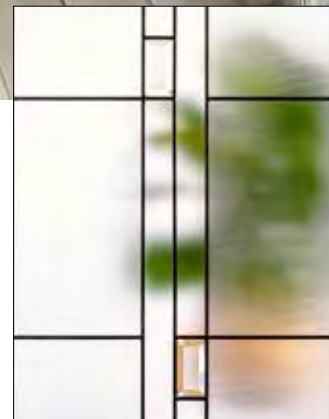




Novatech®

Arima

Arima features clean lines and a consistent rectangle pattern moving throughout the centre of the glass. Combining Screen, Satin and Beveled Clear glass gives a modern fresh feel. Privacy level 7.





Crosswalk

Modern design comes to life through strong linear lines interrupted by bold pops of grey glass. Crosswalk's look is abstract, modern and stylish. Softwave glass in clear and grey is complemented by Micro-Iced Granite glass. Nickel caming is used for a visually clean look. Privacy level 8.



Waterside

Movement is depicted by the glass selection of Softwave and Streamed glass patterns. Black chrome coming sets off the pattern. Privacy level 8.



Element

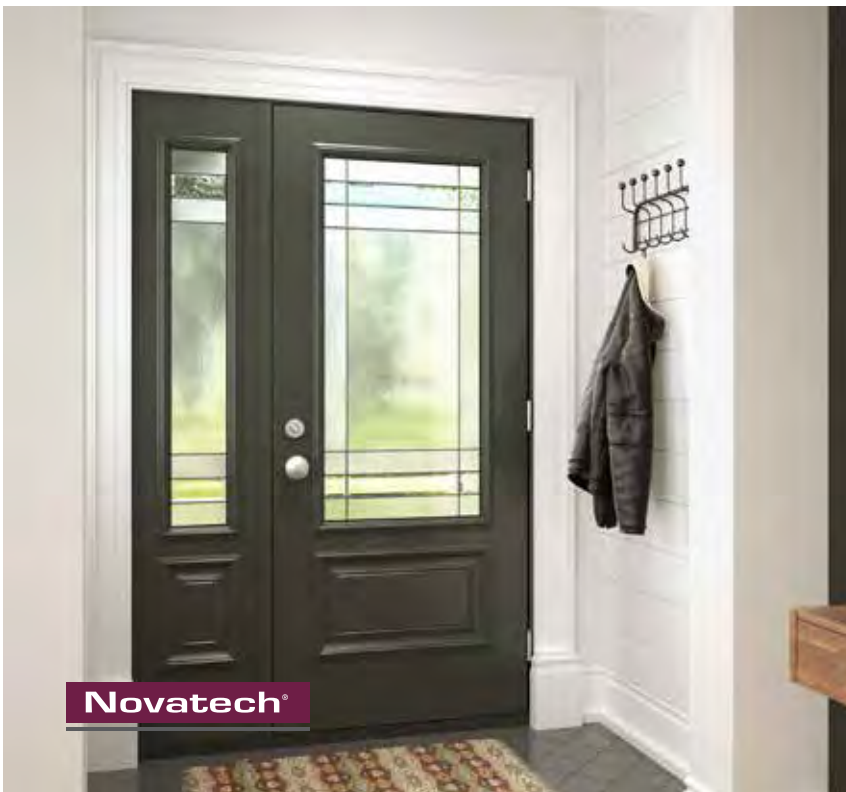
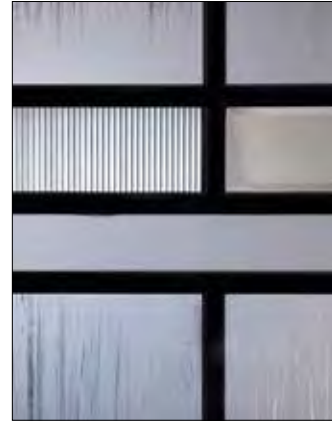
Element glass adds a unique focal point to your entrance. Element glass features platinum coming and complements a variety of home styles. Privacy level 5.





Ryder

Ryder is inspired by minimalism and simple lines. It joins together several high-privacy textures and patterns. Privacy level 8.



Celeste

Celeste juxtaposes different types of glass within its patina coming. Decorative glass is enclosed, providing a triple paned unit. Low E with Argon. Privacy level 7.





Jacinto Wrought Iron

Wrought iron scrolling and textured glass will add old world charm to your home. Whether your architectural style is Spanish or Rustic. Jacinto will bring an authentic touch to your entryway. Privacy level 9.



Only available in 3/4 lite, full lite, full sidelite.



Courtyard Wrought Iron

The pronounced fretwork of Courtyard creates a look that is both strong and subtle. Privacy level 9.



Silkscreen Glass

Silkscreen decorative glass is made by printing a layer of UV cured ink on the surface of glass through the screen mesh used for tempering. As a result silkscreen printed glass is durable, scratch proof, solar shading, anti-glare and beautiful.



ARUM \$\$
View on page 62



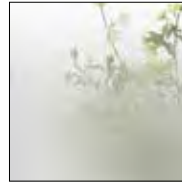
AZUR \$\$
View on madero.ca



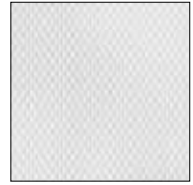
EQUATION \$\$
View on page 36



KIRA \$\$
View on madero.ca



MIST \$\$
View on page 63

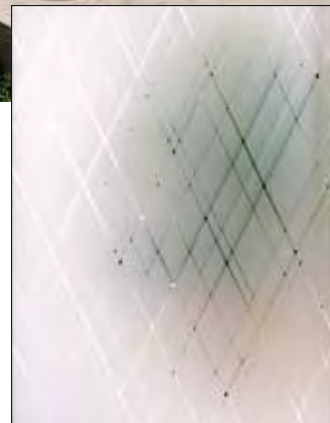


VERSUM \$\$
View on page 96

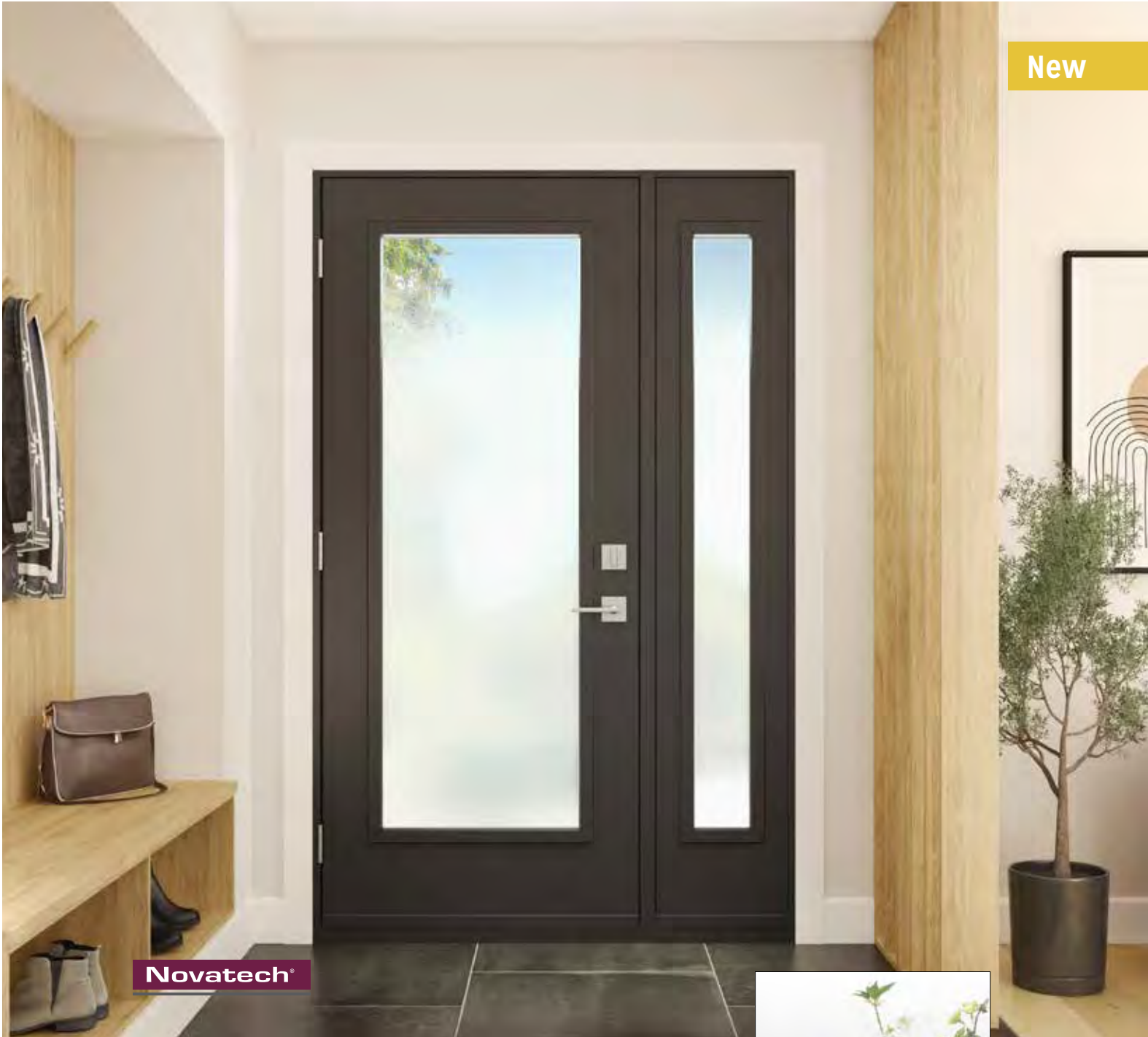


Arum

Arum features two layers of silkscreen with various intersecting lines. Combining the two layers leaves a diamond pattern running throughout the glass. Privacy level 6.

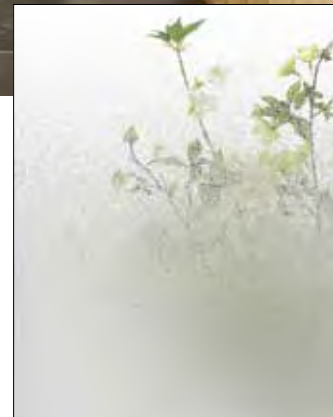


New



Mist

With its gradient of clear dots over a sandblasted finish surface, Mist creates privacy while giving you a view of the sky. Mist hides the interior of your home from the street, but allows you to see outside at all times. This model matches a sleek, contemporary decor. Privacy level 6.



V-Groove Glass

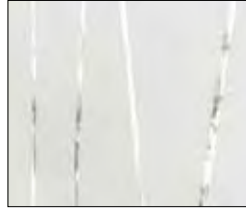
V-Groove patterns incorporate an engraving process on sandblasted tempered glass.
Providing texture and elegance while still having the allure of decorative glass.



ALYS \$\$
View on page 65



EMORI \$\$
View on page 64



RHYTHM \$\$
View on madero.ca

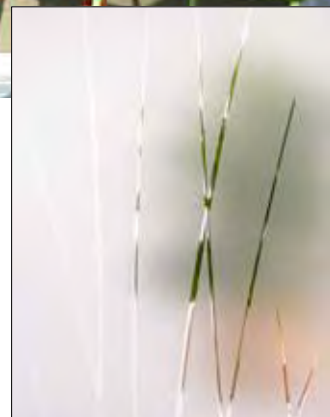


ZENITH \$\$
View on page 65



Emori

Emori features an organic sandblasted pattern that reflects nature while giving you privacy and allowing light through the lines. Privacy level 9.



Alys

The Alys V-Groove suggests motion. It is both natural and abstract and will bring your entryway to life with its dynamic composition. Low E with Argon. Privacy level 9.



Zenith

The simple V-Groove lines are perfect for any design whether paired with a bold textured exterior or a minimalist entryway. Sandblast and Clear glass provide a privacy rating of 6.



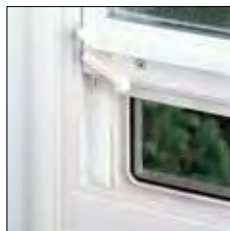


Functional Glass

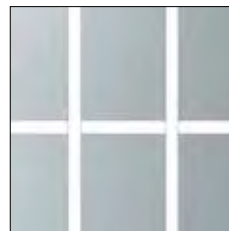
When function and budget matter, Clear glass, Clear glass with Grilles, Venting units and Mini Blinds are the primary choices. There are many selections to choose from including energy efficient Low E.



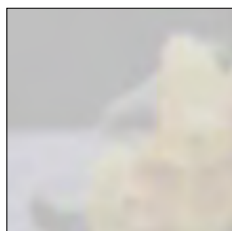
MINI BLINDS
View on pages 70-71



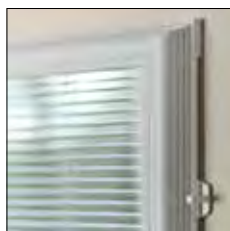
VENTS
View on page 73



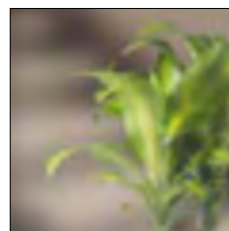
GRILLES
View on pages 67



FROSTED
View on page 69



ADD ON BLINDS
View on pages 72



CLEAR
View on page 68



Black Grilles shown in 10 lite with matching sidelites.



1/2 Lite

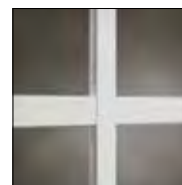
3/4 Lite

One Lite - 10

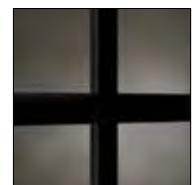
One Lite - 15

Grilles Between Glass Clear Glass

Internal grilles provide the beauty of a true divided lite with ease of cleaning. Grilles are available in 5/8" width, flat profile, Low E. For visualization, go to madero.ca



Grilles - White



Grilles - Black



Clear

When you want the view and nothing but, clear glass is your answer. Partner with direct glazed sidelites and transom for a large window design. Available in Low E, Dual Low E Argon and Triple Low E Argon.





Frosted

Frosted glass blends privacy with natural light. Sandblast glass (page 44) gives a similar appearance to Frosted glass and is available in most sizes.





White

Enclosed Blinds

Light Touch

The single operator lets you raise, lower or tilt the blinds in an easy, slight movement. Blinds adjust for complete light block, and the privacy channels on each side eliminate light gaps when the blinds are closed. Enclosed blinds are sealed tight to eliminate dusting.

Blind options are available in Low E and Double Low E to meet Energy Star 2022 certification.



Enclosed blinds with Espresso

Coloured Enclosed Blinds Collection

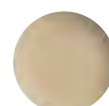
The coloured collection features 4 different colours to choose from: Sand, Espresso, Slate Grey and Silver Moon to coordinate with any decor preference. This collection has the same great features as the Light Touch Mini Blinds.



22"x64", 20"x64"

22"x80", 20"x80"

22"x36", 20"x36"



Sand



Espresso



Slate Grey



Silver Moon



Add-on Blinds Key Benefits

Light and privacy control

- Provides multiple levels of privacy
- Regulates light and U.V rays
- Reduces solar heat gain

Simplifies maintenance

- No dusting
- No tangled cords
- Decreases allergens

Easy installation

- Install over existing door glass
- Complete installation in minutes
- Paintable or stainable frame

Built to last

- No crimping or denting of blind slats
- Non-fading aluminum slats
- 5 Year Limited Warranty

Easy to operate

- Fingertip adjustment
- Slide controllers raise, lower and tilt blinds
- No reaching or stopping to adjust blinds

Promotes safety

- Tempered safety glass
- Concealed cords
- Safe for children and pets



Before you buy:

- 2/8 door can only be single drilled, when using 22" x 36" blind.
- Not compatible over venting inserts.
- Not compatible with levers.
- Confirm the Add-on Blind will work with your existing hardware

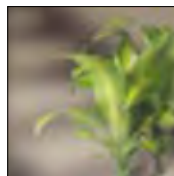


Venting Inserts

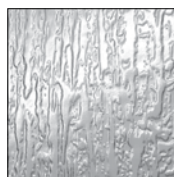
Vents allow for a boost of fresh air in workshops, garages, or your home. Ten adjustments allow you to control the flow of air. A durable UV-resistant moulded frame and removable screen ease cleanup.



Glass options:



CLEAR LOW E



RAIN LOW E
Only available 22" x 36"

Available sizes:



Mark-160
20" x 36"



Mark-12
22" x 36"



Mark-120
20" x 64"



Mark-122
22" x 64"





Vog steel door painted Smokey Teal. Shown with Schlage Century Handleset and deadbolt in Aged bronze.



Hardware

Drilling Options

Choose your hardware from any selection of brand or style. Please specify at the time of ordering: single drill, double drill, mortise faceplate option, a modern pull with deadbolt or multi-point hardware. Pulls and multi-point are only available with a fiberglass door.

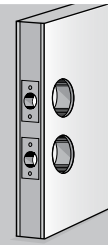
Option 1: Single Drill

Ideal for:
Single lever or knob style hardware.



Option 2: Double Drill

Ideal for:
Handleset, lever or knob with deadbolt hardware.



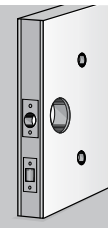
Option 3: Multi-point Hardware for Single Door - Fiberglass only

Multiple locking points simultaneously latch into place through the action of a continuous drive rail, providing security to the perimeter of the door.



Option 4: Deadbolt / Pull Option - Fiberglass only

European styling is achieved with a modern pull and deadbolt combination. The door system includes two architectural grade roller latches.



Schlage Smart Locksets Strength | Style | Smarts

No more worrying whether you locked the front door before you left. With a Schlage smart lock, you can enjoy peace of mind and freedom from keys.

Schlage Touch Deadbolt with Camelot & Century Escutcheon



Satin Nickel (619)

Matte Black (622)

Schlage Touch Screen Lock with Camelot & Century Escutcheon



Satin Nickel (619)

Aged Bronze (716)

Schlage Sense™ Bluetooth Deadbolt with Century Escutcheon



Satin Nickel (619)

Matte Black (622)

Schlage Encode™ Deadbolt with Century & Camelot Escutcheon



Satin Nickel (619)

Matte Black (622)

Satin Nickel (619)

Matte Black (622)

Aged Bronze (716)





Yale Products

Never worry about carrying around, or losing, keys again. Lock and unlock your home with ease using these touchscreen and push button deadbolts. Choose the connected solution that's right for your home.

Navis Paddle Lever

Easily push your door open with your hip or elbow when your hands are full.



NexTouch Touchscreen Keypad Lock with Lever

Provides convenient, key-free access for common areas, exterior doors, stairwells, and resident doors



Assure Touch Deadbolt

Choose the standalone model for keyless entry, or select a connected module solution to add smart features.



Remotely lock or unlock the door, check door status, grant virtual guest keys, and see who's coming and going. Or use your favorite voice assistant to control your door. August smart door lock is easy to install and attaches to your existing deadbolt on the inside of your door so you can keep your original keys. And with built-in Wi-Fi, August lock requires no additional bridge to connect.

August Smart Lock Gen 4



Silver



Black



Satin Nickel
619/C15



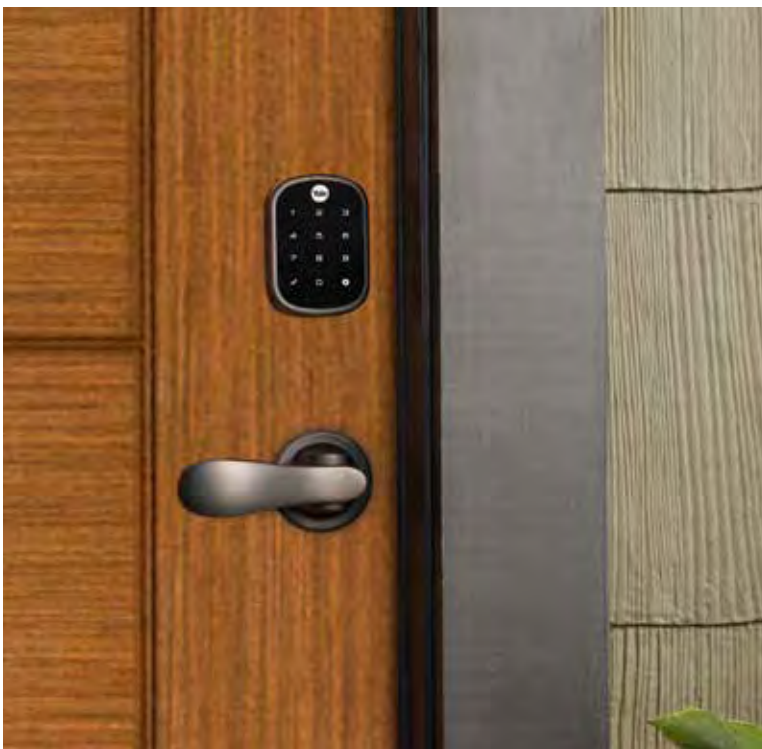
Oil Rubbed
Bronze
C10B



Black Suede
BSP



Polished
Brass
P05





Soho steel door painted Caliente. Shown with custom handle set and Multi-Point lock system.

Multi-Point Hardware



Performance meets style:



Choose your hardware.

Whether knob, lever, or thumbpress, PanoLock is compatible with most off-the-shelf hardware.



A multi-point lock for every budget.

Available at a more approachable price point so you can use PanoLock for more projects (and budgets).



Smooth locking operation.

Supports a more forgiving install and smoother everyday use with tapered bolts and adjustable roller strikes.



The strength and security of a multi-point lock.

Enjoy enhanced performance and security with three locking points.

Multi-Point Lock

The new generation of multi-point locks.



Multi-Point Hardware



How Trilennium® Works

When activated, each Trilennium bolt becomes a true deadbolt that cannot be compromised.

One simple turn of the key or thumbturn engages all three bolts for perfect alignment and added performance.



With the panic release feature, just one turn of the lever disengages all three bolts at once for easy operation.

Trilennium® Handset Collection



Pinnacle Entry Set



Victorian Bronze Satin Nickel Bright Brass



Curved Entry Set



Victorian Bronze Satin Nickel Black



Horizon Entry Set



Victorian Bronze Satin Nickel Bright Brass



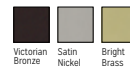
Rectangular Entry Set



Victorian Bronze Satin Nickel Black



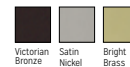
Eclipse Entry Set



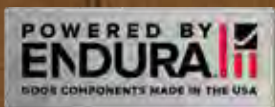
Victorian Bronze Satin Nickel Bright Brass Black



Eclipse Grip Set



Victorian Bronze Satin Nickel Bright Brass Black



A stronger multi-point lock with I-Beam construction means ultimate peace of mind for you.



Multi-Point Astragal for Madero Garden Patio

The Endura multi-point astragal is used on all active - active Madero Garden Patio systems. Multi-point functionality is built right into the astragal, working with standard deadbolts for ultimate cost efficiency. Two locking points automatically engage when the door is locked to fight deflection. Astragal boot lifts clear of the sill when operating the inactive door panel, preventing rubbing, wear or damage. A built in flip lever locks and unlocks for enhanced accessibility.

How the Multi-Point Astragal Works:

Engaging a standard deadbolt activates built-in locking mechanism.



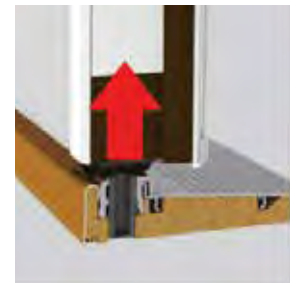
Built-in Lock Pawls engage with keepers in the active door.



Flip Lever locks and unlocks the astragal in one easy motion.




Flush Bolt and Floating Boot lift clear of the sill for damage free operation.



Architecturally Designed Door Pulls

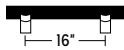
Four families of door pulls to choose from: SoftMet, NoirTek, MegaTek, and Regalead. Choose from a 16", 36", or 60" stainless steel door pull and then choose your locking hardware. All door pull systems are constructed with two architectural grade roller latches.

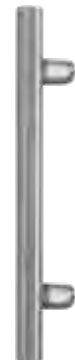


NoirTek™ Collection
(Straight RM3910 / Offset RM3940)

NoirTek's durable black hard coat anodized grip complements many design schemes and is an appealing finish on its own.

- 16" x 1-1/4" diameter straight or offset pull
- Black hard coat anodized grip, stainless steel mounts

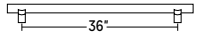
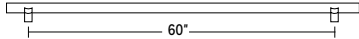
Size: 




MegaTek™ Collection
(Offset RM3311)

Ladder pulls are an artful and functional solution for a dramatic entrance design.

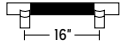
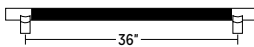
- 36" or 60" x 1-1/4" diameter offset pull
- Polished stainless steel


Sizes: 




SoftMet™ Collection
(Straight RM2510 / Offset RM2540)

- Durable, weather-resistant black Santoprene™ grip—a high performance engineered thermoplastic elastomer
- 16" x 1-1/4" diameter straight or offset pull or 36" x 1-1/4" diameter offset pull
- Stainless steel ends and mounts

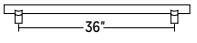
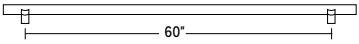
Sizes: 






Regalead Collection
(RM-PB-OS)

Stainless steel pull bars are the perfect accessory for contemporary doors.

- 36" CTC or 60" CTC x 1-1/4" diameter offset pull

Size: 


 **Brushed Anodized**  **Matte Black**

Availability Chart

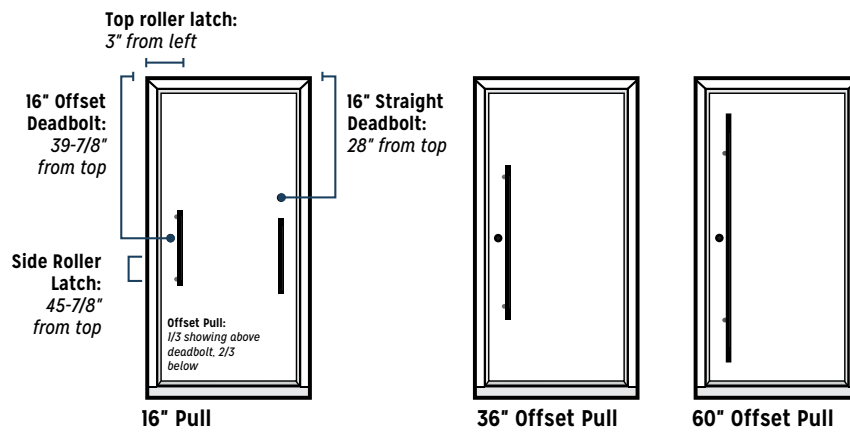
	16" OFFSET/ 16" STRAIGHT	36" OFFSET	60" OFFSET
NoirTek	•	N/A	N/A
MegaTek	N/A	•	•
SoftMet	•	•	N/A
RegaLead	N/A	•	•

*Full Rockwood Collection available by special order.

Architecturally Designed Door Pulls

Door Pull Visualizer

Determine Your Desired Product Style



Offset pulls are designed to incorporate a deadbolt along the length of the pull, whereas a straight pull incorporates the deadbolt installation above the pull.

Offset vs. Straight

Offset vs. straight is usually determined based on the aesthetics you are hoping to achieve, and the functionality required to ensure you have a product which meets your everyday needs.

Offset pulls are designed to incorporate a deadbolt along the length of the pull, allowing additional clearance when locking/unlocking the deadbolt, whereas a straight pull incorporates the deadbolt installation above the pull.

Back-to-Back Mounting

Two door pulls are connected through the door, each pull opposite the other.

All Madero fiberglass slabs feature a full height lock block for lifelong performance.



Disclaimer: All measurements are calculated from the top left of door slab. Some regions may require specific drill locations for deadlock options. Contact your local building inspector for more information.

Locking Hardware



Roller Latch

RL30

- Maximum projection of the roller is 3/8" allowing for variance in the door clearance
- Nylon roller standard
- Stainless steel construction



IVES

Available Finishes:



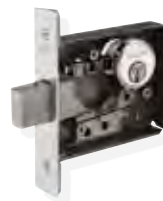
C-32D
Stainless Steel



C-10B
Oil Rubbed Bronze

High Security Mortise

L460P



- High security mortise lock
- Minimalistic cylinder for architectural or European design
- Solid stainless and brass components
- The best in traditional keyed entry locks
- 3 year limited manufacturer's warranty
- Exceeds Grade 1 testing

Available Finishes:



626
Satin Chrome

ALLEGION

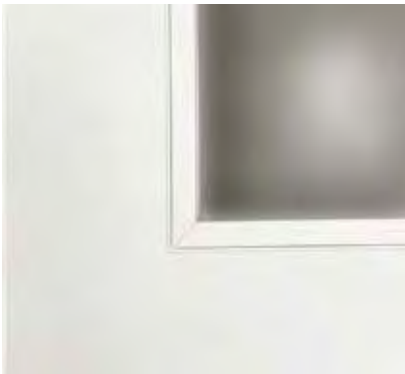
Note: Some regions may require a double latching system to meet local building codes. Contact your local building inspector for more information.



Fiberglass Slabs

Neulite Flush Glazed SG10

With simple and aesthetically clean glass beadings, Neulite Flush Glazed doors are designed to complement today's contemporary home decors. The smooth white shaker-style beading allows for a 1" standard glass thickness and all standard size glass inserts, whether it be decorative, privacy, textured or completely clear. They can be used as an elegant front entrance or an escape to a backyard garden oasis.



Smooth White Neulite Detail

Fiberglass | Steel Slabs

Flush Doors with Insert SG00 | WG00 | ED00

The 24 gauge steel, and the fiberglass slab is cut out in manufacturing to accept the Evolve® insert with glass.

The high performance Evolve® frame material provides superior rigidity and eliminates bothersome squeeze-out through the use of a compression foam tape seal. This latest innovation reduces scalloping, corner flare, and warping. The Evolve® HP frame does not require finishing, but can be painted to match your door colour.



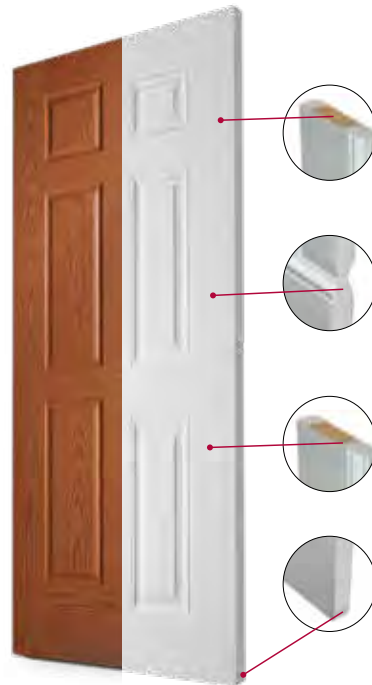
Evolve® High Performance Frame

Door Slabs

Fiberglass

25 YEAR Limited Manufacturer's Warranty

BUILT FOR THE Canadian Climate



Exceptional Security

Our full length steel reinforced wood lock block offers exceptional security while allowing a range of hardware mounting options.

Energy Efficiency

Filled with an insulating core of 100% CFC-free polyurethane foam, providing an excellent R rating, while bonding the two door skins together.

Performance

Rigid structure prevents bowing and warping in extreme temperatures. The fiberglass skins are resistant to dents, dings, splintering, and corrosion. They are very easy to keep clean.

Completely Waterproof

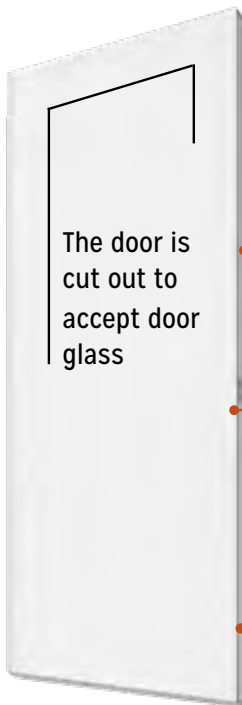
Our full length composite stiles and rails provide complete waterproofing for the door's insulation. The composite materials will not splinter or delaminate and boasts twice the screw holding capacity of wood edge doors.

Steel Slabs

Novatech

10 YEAR Limited Manufacturer's Warranty

A popular choice for Canadian home buyers, our 24 gauge steel doors feature triple shadowed panel embossments for greater detail. The white N600 Polytex finish carries a 10 year warranty, with the smooth, ready to paint finish ready to accept the paint color of your choosing.



The door is cut out to accept door glass

Durability

Door skins interlock with the stile, providing additional support to reduce delamination and stretching.

Strength and Security

16" wood lock block provides strength and security while accommodating double bore lockset/deadbolt.

Energy Efficient

Filled with an insulating core of 100% CFC-free polyurethane foam, providing better energy ratings than a standard styrene core product.

Pre-Finishing Options

Smooth white pre-pigmented fiberglass

doors have a warm white finish to match the composite frame and require no painting. The doors will accept an array of paint colours to match the decor of your home.

To achieve desired finish, woodgrain textured fiberglass doors require paint or stain.

Steel doors are supplied with a N600 Polytex finish, requiring no additional paint to achieve a 10 year limited warranty. Polytex white is cool white while Madero's composite frames are warm white. To achieve a uniform appearance, painting will be required.



Door Frame Specifications



Brickmould Options

5/8" Slimline Aluminum

5/8" Slimline aluminum brickmould comes standard with an integral nailing fin and is versatile for both renovation and new construction.



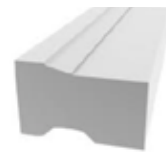
Black



Pure White

#180 Step

Standard option is wood or composite #180 step brickmould. Snaplock nailing fin is added on all composite units.



SnapLock Nailing Fin

(Composite only)

Incorporating a hinge-style design, Madero's SnapLock nailing fin snaps into place for new home construction or can be scored and trimmed if not required.



Jamb Options

Madero Artisan door frame systems are constructed of wood or composite jamb - smooth white or textured. Available in jamb depth of 4-9/16", 6-9/16", 8-9/16" or custom.



Wood

Kiln dried, primed finger-joint pine—double primed for quality performance and ease of painting. Wood frame requires paint on all exposed surfaces within 45 days of purchase.



Composite

- Woodgrain textured or pre-pigmented smooth white frame components are a blend of PVC and wood fiber composite substrate.
- Composite will not discolour, absorb moisture, splinter or rot.
- Smooth white composite does not require paint while woodgrain composite is supplied in its raw almond finish, requiring paint or stain to achieve a realistic, rich appearance.
- Limited life time warranty.



MAINTENANCE FREE
DOESN'T REQUIRE PAINT



DESIGNED FOR THE
CANADIAN CLIMATE



SECURE AGAINST
FORCED ENTRY

Door Frame Specifications



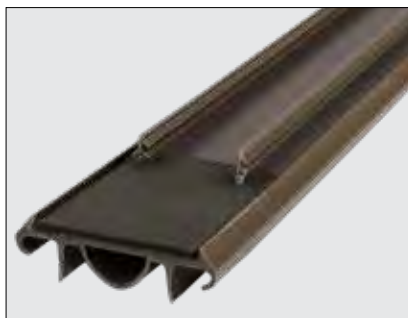
Z-Series Inswing Articulating Sill® and Sealing System

- **Superior Performance**
Z-AC cap sill never needs adjustment, automatically adjusting for a lasting seal against leak and air infiltration.
- **Sealing System**
Gaskets are provided to give an additional seal and to eliminate caulking. Matching corner pads are factory installed to seal out air and moisture. Compression weatherstrip seals tight when the door is closed and expands when open. The Z-AC door bottom is adhered to the door forming a tight seal every time.
- **Additional Protection**
Sills are provided with sill and cap covers to prevent damage during installation.



CERTIFIED & TESTED

To meet the stringent NAFS requirements for doors in a new home construction, all Endura door components are certified and tested.



Z-AC Door Bottom

The Z-AC Door Bottom delivers enhanced protection against air and water infiltration, forming a tight seal every time. Z-AC Door Bottoms seal without caulk for easy assembly and lasting performance.



Simple Solutions® Corner Pad Weatherstripping

The Simple Solution Corner Pad seals out air and moisture. Compression weatherstrip seals tight when the door is closed and expands when opened, providing a long-lasting weather tight solution.



Z-Series Inswing Articulating Sill®

Madero Artisan door systems are provided with black caps and bronze anodized sill decks.



Z-Series Outswing Bumper Sill®

Madero Artisan door systems are provided with bronze caps and black anodized sill decks.





ADaptive Sill System

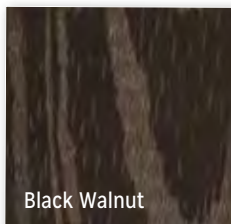
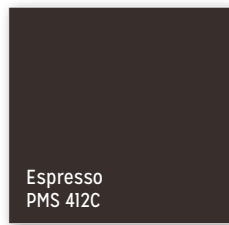
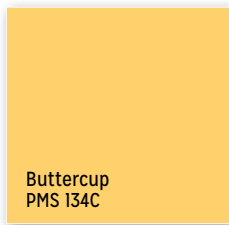
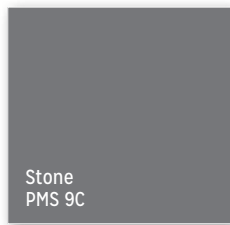
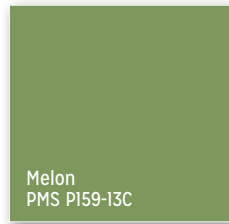
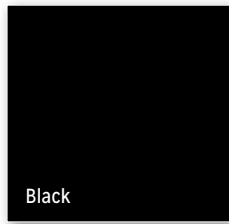
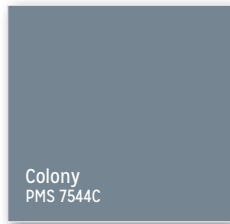
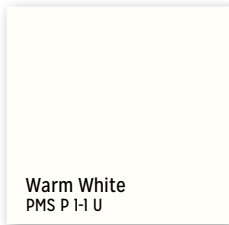
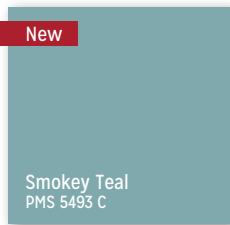
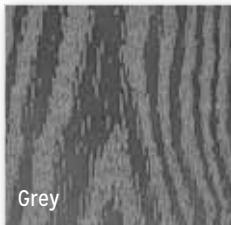
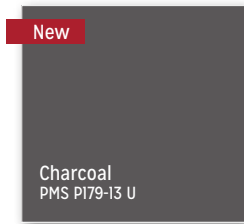
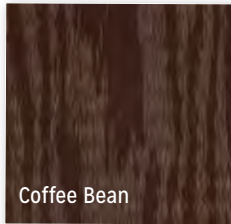
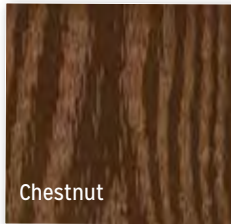
Low profile access provides for ease of mobility for wheelchairs. The thermal break in the sill deters frost buildup. An innovative jamb boot supports a weather-tight seal and secure corner assembly. Full length caulking strip eliminates water penetration.





Tao steel door, painted Caliente in wood frame painted Espresso. Shown frosted sidelite and transom.

Pre-Finishing Options



Madero has identified and selected some of the more popular paint and stain colours. Streamline the colour matching process for your project by selecting from Madero's popular colour choices.

Steel doors are supplied with a polytex finish. Painting is not required, however, the door will accept an array of paint colours to match your home.

Smooth white fiberglass doors are supplied in natural pre-pigmented warm white finish. Painting is not required, however, the door will accept an array of paint colours to match your home.

Woodgrain fiberglass doors are supplied with factory almond finish, requiring paint or stain.

For dark coloured finishes, heat reflective paint is required to achieve a full warranty.

Printed swatch colours may vary slightly from actual product. If you are concerned about exact colour match, we recommend you first request a product sample for accuracy.

Option to paint one side is available. Specify at time of ordering. Split finish option also available.

Garden Patio Product Measurements

Finished Frame Widths

SINGLE HINGED	<i>Net Frame Width</i>	DOUBLE HINGED	<i>Net Frame Width</i>	GARDEN VENTING	<i>Net Frame Width</i>
2/6 + 2/6	63"	2/6 + 2/6	62 1/4"	2/6 + 2/6	63"
2/8 + 2/8	67"	2/8 + 2/8	66 1/4"	2/8 + 2/8	67"
2/10 + 2/10	71"	2/10 + 2/10	70 1/4"	2/10 + 2/10	71"
3/0 + 3/0	75"	3/0 + 3/0	74 1/4"	3/0 + 3/0	75"

* 8/0 height is only available in a fiberglass door and composite frame option.

* Renovator Garden Doors are available in steel doors and wood frame option. Refer to the Entry Garden Door Program.

* Garden Venting in 6/8 outswing only.

Finished Frame Heights

INSWING	<i>Net Frame Height</i>
6/8	81 3/4"
8/0	97 3/4"

OUTSWING	<i>Net Frame Height</i>
6/8	80 3/4"
8/0	96 3/4"

Rough Opening Measurements (RO)

Add 1" to width of net frame

Add 1/2" to height of net frame

For 14" transom, add 15-3/4" to height of net frame.

Outside Measurements of Brickmould (OSM)

180 Step Brickmould: Add 2-1/2" to width of net frame
Add 1-1/4" to width of net frame

Slimline Aluminum Brickmould: No change to net frame height or width

PH5900 PVC Slimline Brickmould: Add 1" to width of net frame
Add 1/2" to height of net frame

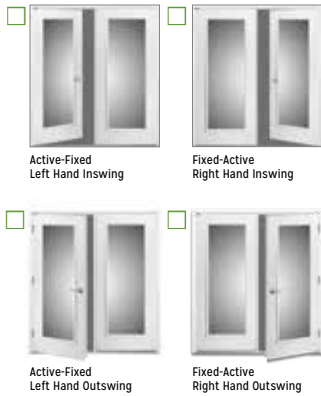


Ordering Checklist

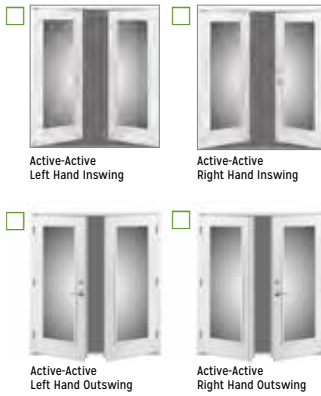
STEP 1
Configuration Options

Choose garden patio door system configuration:

Single Hinged Options:



Double Hinged Options:



Venting



STEP 2
Product

Choose door/frame pairing: *flush slab with insert (00) or Neulite (SG10, WG12)*

- Steel Door
 00
- Smooth White Fiberglass
 00
 10
- Oakgrain Textured Fiberglass
 00
 12

Choose Frame:

- Wood
- Smooth White Composite
- Textured Composite

STEP 3
Glass Options

Choose door lite glass:

- Clear Dual Low-E
- Clear Triple Low-E
- Enclosed Mini Blind
- White Grille: 15 Lite 18 Lite
- Black Grille: 15 Lite 18 Lite

If transom required:

- Clear Dual Low-E

STEP 4
Pre-finishing Options

Stain or Paint Options: *(Stain only available in textured fiberglass.)*



- Paint/Stain Unit - **Both Sides**
- Paint/Stain Unit - **Exterior Side Only**
- Paint/Stain Unit - **2 Colours**
- Paint/Stain Slab Only - **Both Sides**
- Paint/Stain Slab Only - **Exterior Side Only**

STEP 5
Determine Specifications

Choose door size:

- Width:** 2/6 - 2/6 (63") 2/8 - 2/8 (67") 2/10 - 2/10 (71") 3/0 - 3/0 (75")

Height: 6/8

- 8/0

Choose jamb depth:

- 4-9/16" 6-9/16" 8-9/16"

Default brickmould: 180 step

- Attached brickmould Shipped loose Brickmould not required

Aluminum Sill: Bronze Anodized

- Sash Locks on active door

Specify your hinge finish:



Choose desired hardware drilling prep:

ACTIVE DOOR



INACTIVE DOOR

- Blank
- Single Drill (No Edge Bore)
- Double Drill (no edge bore)

Customer Signature: _____ Date: _____

Store Name of #: _____ Tag: _____ PO: _____


While Madero makes every effort to ensure the information contained in this brochure is accurate, we do not accept liability for any inaccuracies. This brochure is subject to change, as well as errors and omissions, without notice or liability. Doors are provided unfinished/unstained and without hardware unless otherwise noted. All photos are for illustration purposes only and depicted doors and frames may not represent Madero products.

Artisan Product Measurements


Finished Frame Widths

Artisan Series doors are available in 2/8, 2/10, 3/0, and 3/6 widths—as noted in design specifications—with 2x4 (4 9/16"), 2x6 (6 9/16"), 2x8 (8 9/16") or custom, jamb construction, left hand or right hand application, and inswing or outswing. **Door dimensions are based on a 14" height rectangular transom and a 12" or 14" sidelite.**


SINGLE DOOR (D) UNIT SIZING

	Net Frame Width	
	2/8	33 1/2"
	2/10	35 1/2"
	3/0	37 1/2"
	3/6	43 1/2"

SIDELITE-DOOR (SD) UNIT SIZING

	Net Frame Door with 12" Sidelite		Net Frame Door with 14" Sidelite	
	2/8	46 7/8"	2/8	48 7/8"
2/10	48 7/8"	2/10	50 7/8"	
3/0	50 7/8"	3/0	52 7/8"	
3/6	56 7/8"	3/6	58 7/8"	

SIDELITE-DOOR-SIDELITE (SDS) UNIT SIZING

	Net Frame Door with 2 - 12" Sidelites		Net Frame Door with 2 - 14" Sidelites	
	2/8	60"	2/8	64"
2/10	62"	2/10	66"	
3/0	64"	3/0	68"	
3/6	70"	3/6	74"	

Finished Frame Heights (all systems)

6/8 Inswing – Finished Frame Height: 82"

6/8 Outswing – Finished Frame Height: 81"

8/0 Inswing – Finished Frame Height: 98"

8/0 Outswing – Finished Frame Height: 97"

Rough Opening Measurements

To calculate rough opening, add 1" to width and add 1/2" to height of net frame.

Rough Opening Measurements to Include Transom

For all transoms, add 15 3/4" to height of net frame.

For decorative transoms, add 3/4" to width.

OSM Brickmould

180 Step Brickmould: Add 2-1/2" to width of net frame
Add 1-1/4" to height of net frame

Slimline Aluminum Brickmould: No change to net frame height or width

PH5900 PVC Slimline Brickmould: Add 1" to width of net frame
Add 1/2" to height of net frame



Inswing - Right Hand
View from outside of home.



Outswing - Right Hand
View from outside of home.

Ordering Checklist

STEP 1 Configuration Options

Single:

Left Hand Inswing Door Right Hand Inswing Door Left Hand Outswing Door Right Hand Outswing Door

Transom

Transom with No Sidelite Transom with One Sidelite Transom with One Sidelite Transom with Two Sidelites

Single Door with Sidelites:

Left Hand Inswing Door-Sidelite Right Hand Inswing Sidelite-Door Left Hand Inswing Sidelite-Door-Sidelite Right Hand Inswing Sidelite-Door-Sidelite

Door Design:
 Artisan 2022/2023 Brochure Page # _____
 Door Design: _____

STEP 2 Product

Door Model #: _____

Steel _____
 Fiberglass _____

Frame:

Wood _____
 Smooth White Composite _____
 Textured Composite _____

STEP 3 Choose Your Glass

Door Glass: Please Specify _____

Sidelite Glass: DIRECT GLAZED Clear Low-E Frosted (Transclear Low E) Other (Please Specify) _____

Note: Pricing is the same for 12" and 14" panelled sidelites. Limited models are available in 12", confirm with a sales agent.

SIDELITE PANEL SIZE: ___ 12"(full only) ___ 14"

SIDELITE PANEL: Full Lite (Please Specify) _____ 1/2 Lite (Please Specify) _____
 3/4 Lite (Please Specify) _____ Clear Low E _____

TRANSOM GLASS: Clear Low E

STEP 4 Determine Specifications

Choose Door Size: Width: 2/8 (32") 2/10 (34") 3/0 (36") 3/6 (42") | **Height:** 6/8 (80") 8/0 (96") select designs only

Choose Jamb Depth: 4-9/16" 6-9/16" 8-9/16" Other _____

Choose Brickmould: (Default 180 step)
 Attached Loose Other _____

STEP 5 Hardware Preparation Options

Single Drill
 Ideal for: Single lever or knob style hardware.

Double Drill
 Ideal for: Handleset, lever or knob with deadbolt hardware.

Deadbolt / Pull Option
 European styling is achieved with a modern pull and deadbolt combination. Includes two architectural grade roller latches.

Multi-Point
 Multi-point hardware is designed to lock at several points throughout the height of the door, making the lock side of the door as secure as the hinge side.

Hinge Finishes

C-26 Zinc Plated C-4 Brushed Brass C-10B Oil Rubbed Bronze C-26D Brushed Chrome C-10 Matte Black

Multi-Point:
 Design: _____ Finish: _____

Aluminum Sill: Bronze Anodized

STEP 4 Pre-finishing Options

Stain Options

Red Mahogany Walnut Black Walnut Coffee Bean Chestnut Grey Espresso

Paint Options

Black Charcoal Stone Ash Warm White Cadet Navy Colony Smokey Teal Melon Tangerine Buttercup Calliente

Customer Signature: _____ Date: _____

Store Name or #: _____ Tag: _____ PO #: _____



Double hinged doors with Versum glass, painted Espresso. Right hand inswing.



Madero Exterior Doors are manufactured in Western Canada and can be purchased through our dealer network. Madero is a leader in the use of fiberglass and steel doors in wood or composite frames. We fabricate several lines of door systems, with quality craftsmanship being our focus for every door we build.



Entry Doors



Garden Patio Doors



Interior Doors



Multi-Family





Larson Product Catalogue



Commercial

Contact us at:

madero.ca | canada.orders@madero.ca | 1.800.667.6977

  @maderocanada

Printed & designed by

